

ULYSSES Map of County Dublin



The James Joyce Museum

Joyce Tower, Sandycove, Co. Dublin
 Tel. +353-1-280 9265 / 872 2077
 Fax +353-1-280 9265 / 872 2231
 E-mail joycetower@dublintourism.ie
 www.visitdublin.com

Beautifully located 8 miles south of Dublin on the coast road, the Joyce Tower is one of a series of Martello Towers built to withstand an invasion from Napoleon and is also the location of a museum devoted to the life and works of James Joyce, who made the tower the setting for the first chapter of *Ulysses*.

Among the items on display are Joyce's guitar, waistcoat and travelling trunk, his poignant death mask and a collection of pictures, documents and miscellaneous objects which illustrate Joyce's life and his fascinating relationship with Dublin.

Opening Times
 March - October
 Monday to Saturday 10.00 to 13.00 hrs
 14.00 to 17.00 hrs
 Sunday & public holidays 14.00 to 18.00 hrs
 Bloomsday (16 June) 08.00 to 18.00 hrs
 November to February incl., open by arrangement.

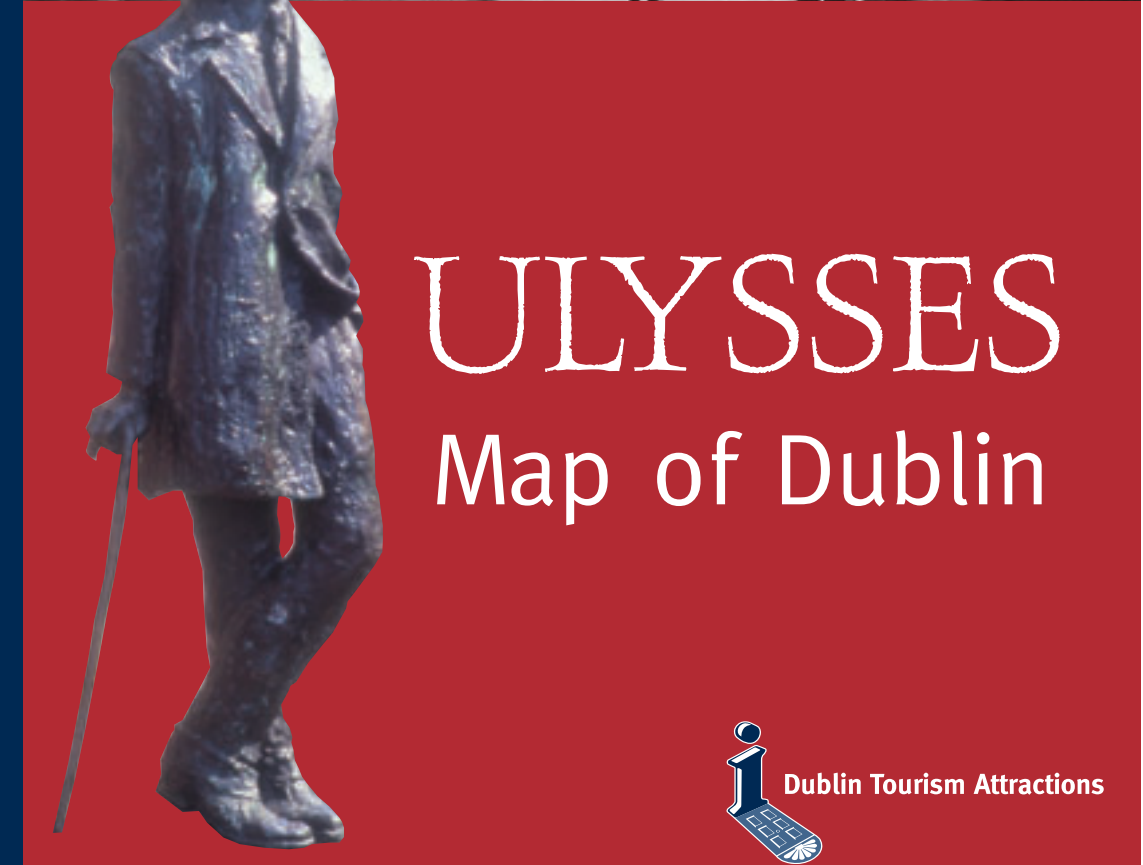
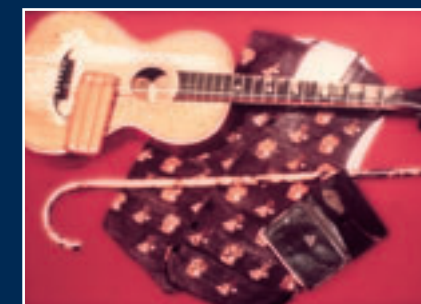
Facilities
 Bookshop
 Information available in foreign languages

Directions
 8 miles south of Dublin along coast road.
 Bus No. 8 from Eden Quay to Ulverton Road (past Bullock Castle), 15 minutes walk to James Joyce Museum from here.
 DART rail service to Sandycove.

Special Group rates are available for 20 persons or more.

Combined Admission Tickets available with any of the Dublin Tourism Attractions:

- Dublin Writers Museum
- Shaw Birthplace
- Malahide Castle
- Fry Model Railway



ULYSSES Map of Dublin



ULYSSES Map of Dublin



Leopold Bloom's travels around the city of Dublin on the 16th of June 1904 have passed from literature into legend. Between 8 am and 2 am the following morning he covers a distance of about 18 miles (29 kilometres), eight of them on foot. While some large sections of his itinerary are not described at all in *Ulysses*, some others can be followed in particularly close detail, for instance, most of *Lotuseaters*, *Hades* and *Laestrygonians*. This map shows the principal locations of the eighteen episodes of the novel.

Much of Joyce's Dublin still survives. Though 7 Eccles Street and Barney Kiernan's are gone, followers of Bloom can still visit Davy Byrne's, Sweny's the chemist, and the Ormond Hotel. Nearly all of the public buildings, churches and pubs mentioned in *Ulysses* exist today.

At the tower in Sandycove, where the novel opens, there is now a famous James Joyce Museum. Letters, documents, personal possessions and portraits of the writer are on display, as well as first editions of his books and items associated with the Dublin of *Ulysses*. The top of the tower, where 'Stately, plump Buck Mulligan' emerges for his morning shave, still commands a panoramic view of Dublin Bay, while the round room below appears as it did during Joyce's short, but significant, stay there in 1904. Books, cards and Joycean information are also available at the museum.

Displays of Joycean material may be seen at the James Joyce Museum in Sandycove, at the Joyce Centre in North Great George's Street, and at the Dublin Writers Museum in Parnell Square. Among many other places of Joycean interest are Newman House in St. Stephen's Green, where Joyce was a student, and the National Library in Kildare Street, which has an important collection of Joyce's papers and manuscripts.

Dublin Tourism Attractions

Malahide Castle, James Joyce Museum, Dublin Writers Museum, Shaw Birthplace, Fry Model Railway.

For further information on Dublin Tourism Attractions
Tel: +353 1 8462184 or email: attractions@dublintourism.ie



Produced by Dublin Tourism

www.visitdublin.com

Print on front cover courtesy of the National Library of Ireland. Dublin Tourism Map courtesy of Ordnance Survey.

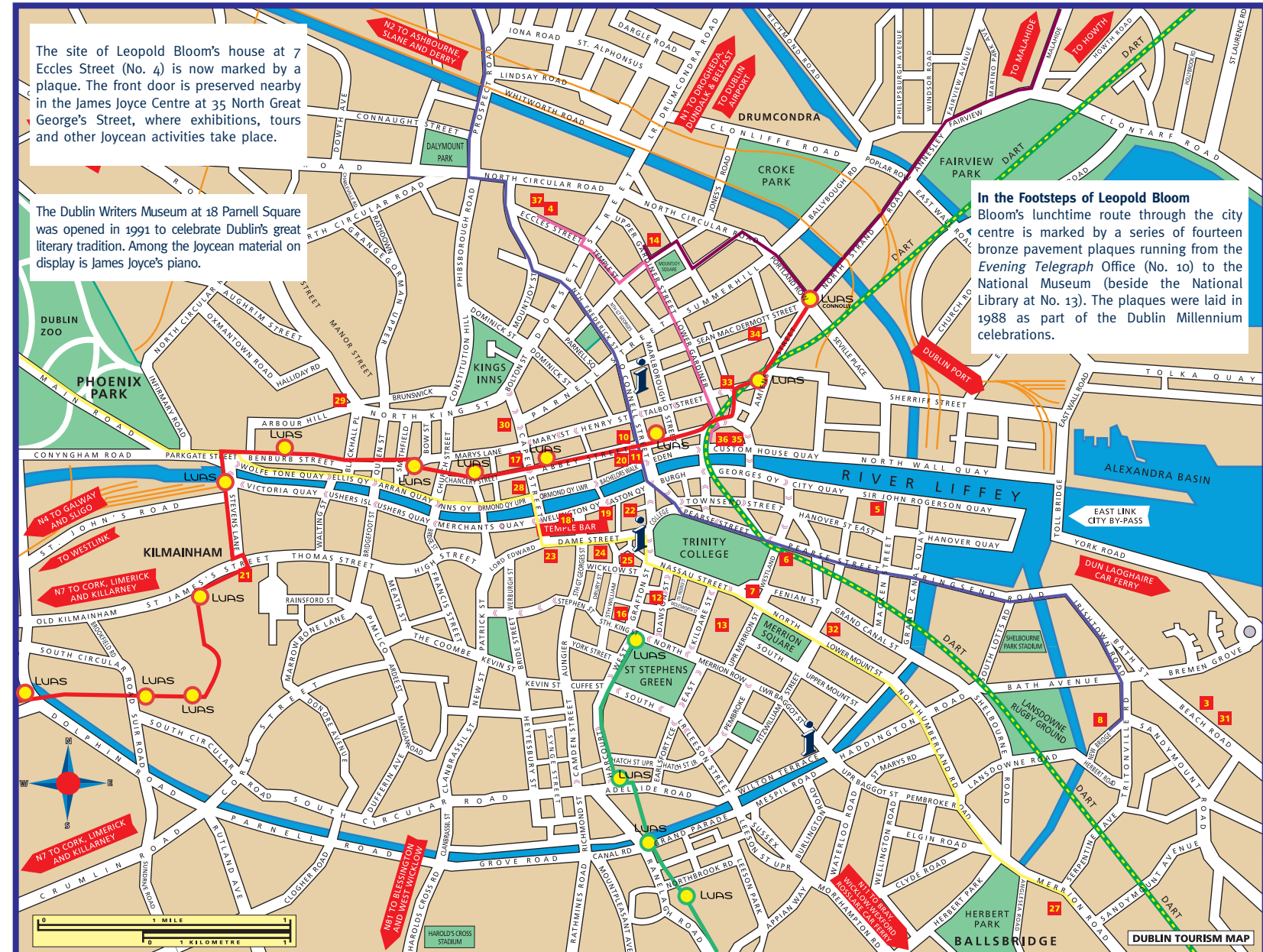


Map Index

1. **Telemachus** 8am
The Joyce Tower, Sandycove.*
2. **Nestor** 9.45am
The School, Summerfield, Dalkey Avenue.*
3. **Proteus** 11am
Sandymount Strand.*
4. **Calypso** 8am
No. 7, Eccles Street.
5. **Lotuseaters** 9.45am
Sir John Rogerson's Quay.
6. **Hades** 11am
Westland Row Post Office.
7. Sweny's shop, Lincoln Place.
8. **Hades** 11am
Paddy Dignam's house, 9 Newbridge Avenue, Sandymount. Funeral route (■) to Glasnevin Cemetery.*
9. **Aeolus** 12.15pm
Freeman's Journal/ Evening Telegraph office, Prince's Street.
10. **Laestrygonians** 1.10pm
Graham Lemon's sweetshop, 49 Lwr. O'Connell Street.
11. Davy Byrne's pub, Duke Street.
12. **Scylla and Charybdis** 2.10pm
National Library of Ireland, Kildare Street.
13. **Wandering Rocks** 2.55pm
Father Conmee: Jesuit house, Gardiner Street (■) to Marino.*
14. Blazes Boylan: Thornton's shop, 63 Grafton Street.
15. Ned Lambert: the Chapter House, St. Mary's Abbey.
16. Lenehan and M'Coy: Crampton Court.
17. Mr Bloom: Merchant's Arch.
18. Dilly Dedalus: Dillon's auction rooms, 25 Bachelor's Walk.
19. Mr. Kernan: James's Street.
20. Stephen Dedalus: Russell's shop, 57 Fleet Street.
21. Martin Cunningham: Dublin Castle.
22. Buck Mulligan: DBC tearooms, 33 Dame Street.
23. Master Dignam: Ruggy O'Donoghue's pub, 23 Wicklow Street.
24. Viceroy's cavalcade: Viceregal Lodge, Phoenix Park* (■) to RDS showgrounds, Ballsbridge.
25. **Sirens** 3.40pm
The Ormond Hotel, Ormond Quay.
26. **Cyclops** 5pm
Arbour Hill/Stonybatter.
27. Barney Kiernan's pub, 8-10 Little Britain Street.
28. **Nausikaa** 8.25pm
Sandymount Strand.*
29. **Oxen of the Sun** 10pm
Holles Street Hospital.
30. **Circe** 11.25pm
Mabbot Street (now James Joyce Street) entrance to Nighttown.
31. Bella Cohen's, 82 Lwr. Tyrone Street (Railway Street).
32. **Eumaeus** 12.40pm
Cabman's shelter, Butt Bridge.
33. **Ithaca** 1am
Cabman's shelter (■) to Eccles Street.
34. **Penelope** 2am
No 7, Eccles Street.

* Refer to Ulysses Map of County Dublin overleaf.

ULYSSES Map of Dublin



The site of Leopold Bloom's house at 7 Eccles Street (No. 4) is now marked by a plaque. The front door is preserved nearby in the James Joyce Centre at 35 North Great George's Street, where exhibitions, tours and other Joycean activities take place.

The Dublin Writers Museum at 18 Parnell Square was opened in 1991 to celebrate Dublin's great literary tradition. Among the Joycean material on display is James Joyce's piano.

In the Footsteps of Leopold Bloom
Bloom's lunchtime route through the city centre is marked by a series of fourteen bronze pavement plaques running from the *Evening Telegraph* Office (No. 10) to the National Museum (beside the National Library at No. 13). The plaques were laid in 1988 as part of the Dublin Millennium celebrations.